

Part # 007-4023-001

Quick-Start Guide



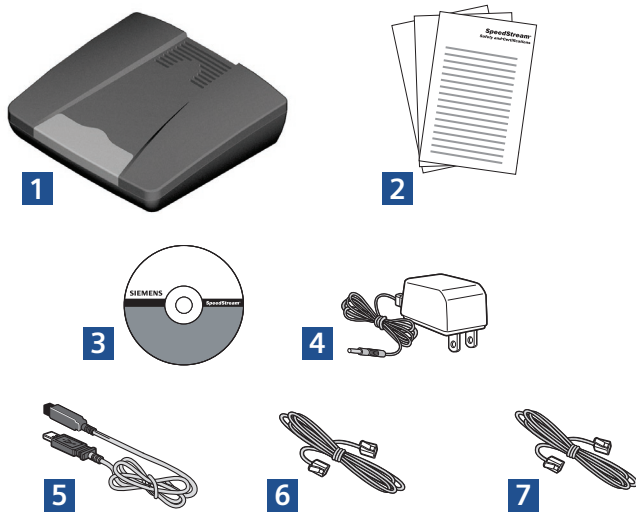
SpeedStream®
4200 Modem
PPPoE Modem
Router

SIEMENS

Global network of innovation

Before you begin,

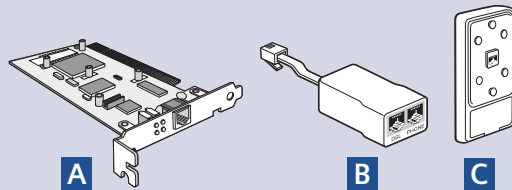
Verify that the following items came with your DSL kit:



- 1 SpeedStream® Device
- 2 Documentation
- 3 Software Manual CD-ROM + USB drivers
- 4 Power supply
- 5 USB cable
- 6 RJ-45 Straight-through Ethernet cable
- 7 RJ-11 DSL cable

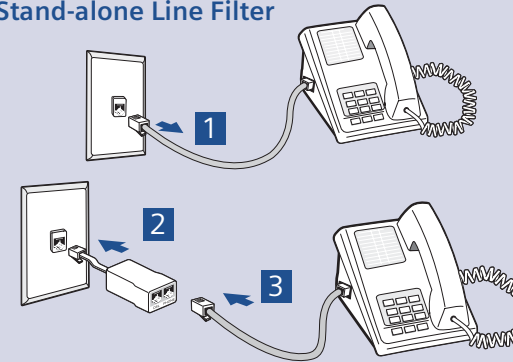
Your service provider may include an Ethernet adapter, a line filter, and a wall-mount filter in your DSL kit. If you received any of these items, follow the instructions provided in this guide for basic installation. If you need further assistance installing these items, please contact your service provider.

- A PCI Ethernet adapter
- B Line filter(s)
- C Wall-mount filter

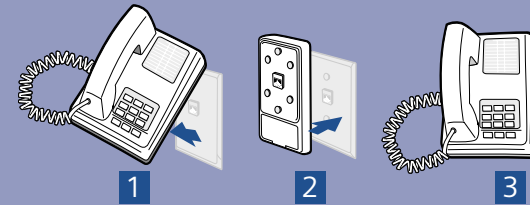


Step 1 > Install Line Filters

Stand-alone Line Filter



Wall-mount Filter



Devices such as fax machines, caller ID boxes, or phones that share the same phone line as your DSL account require a line filter, which prevents noise from disrupting the DSL signal on the phone line. Filters can be in the form of a stand-alone line filter or a wall-mount filter.

Stand-alone Line Filter

For each device that shares the DSL phone line:

1. Unplug the device's cord from the phone jack.
2. Plug the filter into the phone jack.
3. Plug the phone cord (or other device cord) into the filter.

Wall-mount Filter

For a wall-mount phone, install a wall-mount filter.

1. Remove the phone.
2. Connect the wall-mount filter to the wall plate.
3. Reconnect the phone.

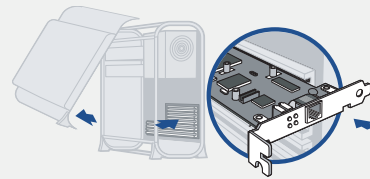
Step 2 > Choose an Installation Method

The SpeedStream® device may be connected to either an existing USB port or an Ethernet port. If you choose to attach the SpeedStream® device via the Ethernet interface, it is only necessary to complete the steps in Option A. Otherwise, proceed directly to Option B for USB installation.

Option A > Ethernet Installation Method

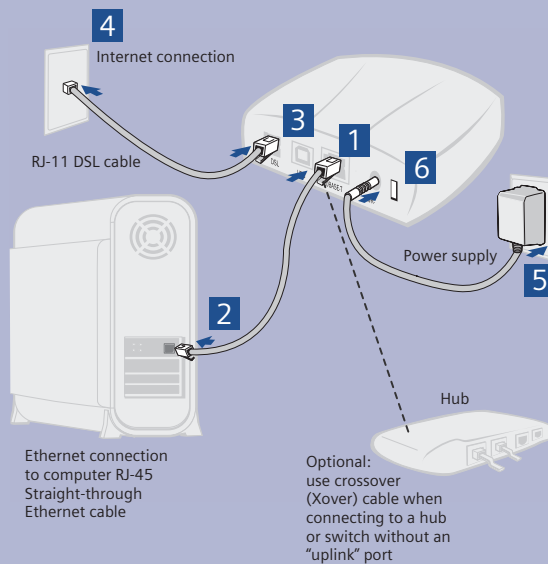
Install Ethernet Adapter

You will need to install an Ethernet adapter if your computer does not already have one installed. Refer to your Ethernet adapter manufacturer's documentation for complete installation instructions.



Connect the SpeedStream® Device

1. Connect the straight-through Ethernet cable (RJ-45) to the Ethernet port on the SpeedStream® device (yellow port).
2. Connect the other end of the straight-through Ethernet cable (RJ-45) to the Ethernet port on your computer.
3. Plug the DSL cable (RJ-11) into the DSL port on the SpeedStream® device (gray port).
4. Plug the other end of the DSL cable (RJ-11) into the phone jack.
5. Plug the power adapter into the power outlet and SpeedStream® device (black port).
6. Ensure the SpeedStream® device is powered on (power switch located on right side of back panel).

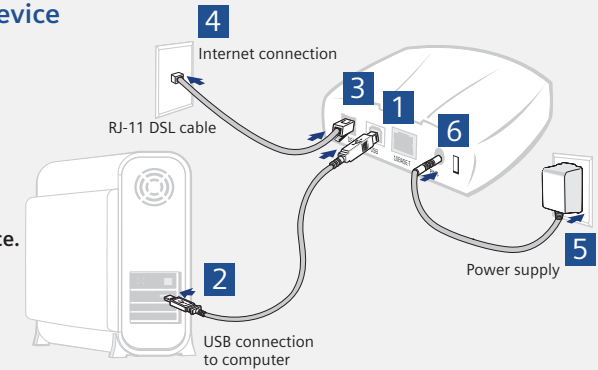


You have completed the installation of your SpeedStream® hardware. There is no software installation required when using the Ethernet connection method. If you have the router model, proceed to Step 3 to configure your router and connect to the Internet.

Option B > USB Installation Method

Connect the SpeedStream® Device

1. Connect the USB cable to the USB port at the rear of the SpeedStream® device (blue port).
2. Connect the other end to the USB port on your computer.
3. Plug the DSL cable (RJ-11) into the DSL port on the SpeedStream® device.
4. Plug the other end of the cable (RJ-11) into the phone jack.
5. Plug the power adapter into the power outlet and SpeedStream® device.
6. Ensure the SpeedStream® device is powered on (power switch located on right side of back panel).



You have completed the installation of your SpeedStream® DSL hardware. Install the USB driver software on your PC using one of the procedures below.

Windows USB Driver Installation

Software Installation

You will need to install USB drivers, if you are connecting the SpeedStream® device to your computer via the USB port. Before installing the software, make sure your PC is equipped with the following: Windows® 98, Windows® 98 Second Edition (SE), Windows® 2000 Professional, Windows® Millennium Edition (Me), or Windows® XP; 32 MB RAM; Pentium-compatible 166 MHz or faster processor; 12 MB available hard disk space.

1. Insert the SpeedStream® Installation CD into your CD-ROM drive. This will automatically start the software installation program. Follow the on-screen directions to complete the software installation.
2. After the USB driver is installed, continue with PC Configuration Procedures described on the next page.



If the software installation program does not automatically start, you can manually start it using the following procedure.

1. Click **Start > Run**.
2. Browse to setup.exe on the CD and double-click it. This will start the software installation program.
3. Follow the on-screen directions to complete the software installation.

Macintosh USB Driver Installation

Software Installation

Before installing the software, make sure your Mac is running OS 8.6 or above. This procedure will restart your computer to complete the installation.

1. Insert the SpeedStream® Installation CD into your CD-ROM drive.
2. Open the SpeedStream® Icon from the desktop.
3. Click **Readme.txt**.
4. Follow the directions in the **Readme.txt** to complete the software installation.
5. After the USB driver is installed, continue with PC Configuration Procedures described on the next page.

Step 3 > PC Configuration Procedures

Windows Configuration

In order to setup the SpeedStream® device, your PC must first be configured to obtain an IP address from a DHCP server. Follow the procedure below:

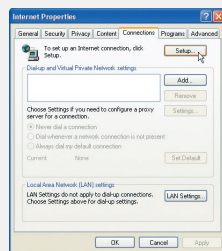
Note: The following procedures cover configuration of a PC running Windows XP. Please refer to the User Guide on the CD-ROM for help configuring other operating systems.

1. Click **Start > Control Panel**.
2. Double-click the **Network Connections** icon.
3. Double-click your **Network Card**.
4. Click **Properties**.
5. Select **Internet Protocol (TCP/IP)**.
6. Click **Properties**.
7. Select **Obtain an IP address automatically**.
8. Select **Obtain DNS server address automatically**.
9. Click **OK** and exit out of the Control Panel.
10. Configure Internet Access using the procedure that follows.

Internet Access

Next, make sure your PC will use the SpeedStream® device (and not Dial-Up Networking) when connecting to the Internet. Follow the procedure below:

1. Click **Start > Control Panel**.
2. Double-click the **Internet Options** icon.
3. Click the **Connections** tab.



4. Click **Setup**.



5. Click **Next**.
6. Select **Connect to the Internet**.
7. Click **Next**.
8. Select **Setup my connection manually**.
9. Click **Next**.
10. Select **Connect using a broadband connection that is always on**.
11. Click **Next**.
12. Click **Finish**.
13. If you have a router, configure the router using the Router Configuration procedure that follows.

Router Configuration

Windows Me and XP users: If you have Universal Plug and Play (UPnP) enabled, Windows may detect the SpeedStream® device upon startup and provide a shortcut to the device on the desktop or system task tray. The icon will be labeled as "Residential Gateway." Double-click the icon and skip to step 3.

1. Start your Web browser.
2. In the Address box, enter the following: **http://speedstream**
3. When prompted for a username and password, type **admin** for the password only (username is not required).
4. Click **Login** and enter the username and password provided by your service provider.
5. Click **Save**.
6. If additional configuration is desired, select **Setup** to configure DHCP, firewall settings, security options, and also to view status and statistical information.

Note: If your Service Provider requires you to use separate PPPoE client software, discontinue use of this software. The SpeedStream® device will negotiate the PPPoE login to your service provider's network.

Congratulations! You have completed the installation of your SpeedStream® device.

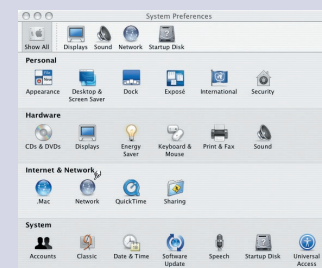
Macintosh Configuration Procedures

Macintosh Configuration

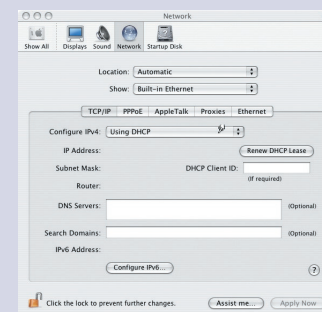
In order to setup the SpeedStream® device, your computer must first be configured to obtain an IP address from a DHCP server.

Follow the procedure below for OSX:

1. Click **Apple -> System Preferences**.



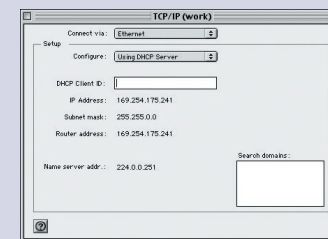
2. Select the **Network** icon under the **Internet & Network** section.



3. Select one of the following from the **Show** drop-down menu:
 - **Built-in Ethernet** if connecting via Ethernet.
 - **Ethernet Adaptor [en0, en1,...]** if connecting via USB.
4. Select **Using DHCP Server** from the **Configure IPv4** drop-down menu.
5. Click **Apply Now** and exit out of **System Preferences** window.
6. If you have a router, configure the router using the Router Configuration procedure that follows.

Follow the procedure below for OS9:

1. Click **Apple -> Control Panels -> TCP/IP**.








2. Select one of the following from the **Connect via** drop-down menu:
 - **Ethernet or Ethernet built-in** if connecting via Ethernet.
 - **SpeedStream 5x Series** if connecting via USB.
3. Select **Using DHCP Server** from the **Configure** drop-down menu.
4. Close window and save changes.
5. If you have a router, configure the router using the Router Configuration procedure that follows.

Router Configuration

1. Start your Web browser.
2. In the Address box, enter the following: **http://speedstream**
3. When prompted for a username and password, type **admin** for the password only (username is not required).
4. Click **Login** and enter the username and password provided by your service provider.
5. Click **Save**.
6. If additional configuration is desired, select **Setup** to configure DHCP, firewall settings, security options, and also to view status and statistical information.

Congratulations! You have completed the installation of your SpeedStream® device.

Troubleshooting

LED	Off 	Green 	Blinking Green 	Red 	Blinking Red/Green 
Power	- Power not applied	Normal system operation	N/A	Self-test failure if red for more than 30 seconds	Flash write in progress
Ethernet	- Power not applied - Ethernet link not connected	Ethernet link connected	Ethernet traffic flowing in either direction	N/A	N/A
DSL	- Power not applied - DSL signal not detected	DSL line is trained and ready for traffic	DSL is training	N/A	N/A
USB	- Power not applied - No USB connection	USB Connected	USB user traffic flowing in either direction	N/A	N/A
Activity	- Power not applied - No LAN data activity	N/A	LAN user traffic flowing in either direction	N/A	N/A

SIEMENS

Global network of innovation

Siemens Subscriber Networks, Inc.
 4849 Alpha Road
 Dallas, TX 75244
 (972) 852-1000
 Fax (972) 852-1001
 usa.800siemens@icn.siemens.com
<http://www.icn.siemens.com/subscriber>

Copyright© 2004 SIEMENS SUBSCRIBER NETWORKS, INC. All rights reserved. Siemens and the Siemens logo are trademarks of Siemens AG, Germany. All other trademarks are held by their respective companies. Siemens reserves the right to make changes to product specifications at any time without notice.